

# HYDRA-MES for SAP



Optimum complement to SAP modules

Ergonomic functions for data collection

Perfect integration into the production environment

Practice-oriented functions for production-related areas

Standard and individual interfaces to SAP

# HYDRA-MES for SAP

Many companies plan and control their business processes with commercial, horizontal solutions of SAP. The efficiency of SAP systems depends, among other things, on the quality and the topicality of the data to be processed. Subsystems such as HYDRA-MES are in the position to collect current data from the areas production, HR and quality, forward them to SAP modules in time and provide complementary functions for the production-related departments.



## Close collaboration with SAP

Within the scope of their Complementary Software Partner Program, SAP collaborates with solution providers whose systems effectively complement and support the SAP functions. Especially, manufacturing companies benefit from effective Manufacturing Execution Systems (MES) which record the information in time, upload them to the SAP system and provide the employees, working close to the production or who are technically-oriented, with complementary functions as add-ons to SAP.

MPDV has actively been contributing in the partner program of SAP for many years and has acquired extensive know how and substantial experiences in the SAP environment due to a variety of realized projects. Our inhouse SAP Competence Center supports our customers in optimally using the modules of our MES HYDRA in collaboration with the SAP functions and thus closing the gap between the production processes and the management level. For the communication, HYDRA uses interfaces, that correspond to the SAP conventions and are certified officially by SAP AG as a sign of their operability.

## HYDRA as MES solution in the SAP environment

Many SAP users need further functions going beyond the range of SAP. HYDRA-MES offers complementary applications for the areas

- Machine and process data
- Shop floor control
- Material and production logistics
- Quality data collection
- Tool and resource management
- Time and attendance
- Access control
- Determination of basic data for incentive wages

The data exchange with the SAP modules PP, PP-PI, PP-REM, CO, HR, PM, PS, QM, MM and the NetWeaver is optionally based on

- certified interfaces HR-PDC and PP-PDC or KK1 and KK2 (PDC-CC1 and -CC2),
- standardized interfaces KK3, KK4 (PDC-CC3, -CC4), PI-PCS, PP-REM, QM-IDI and MM-MOB,
- individual interfaces using BAPI and iDOC technologies.

In case that the SAP applications only need to be completed by current data, HYDRA is used as pure data collection system that is described in a separate brochure.

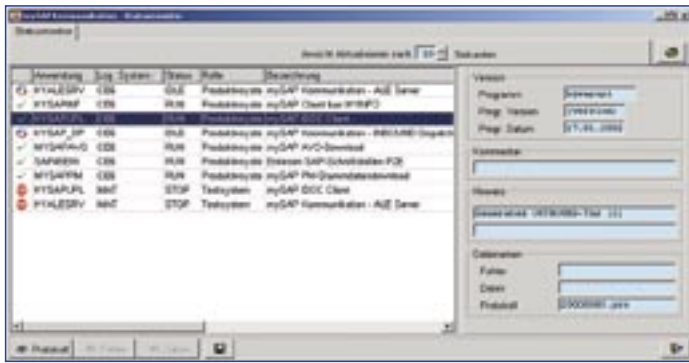
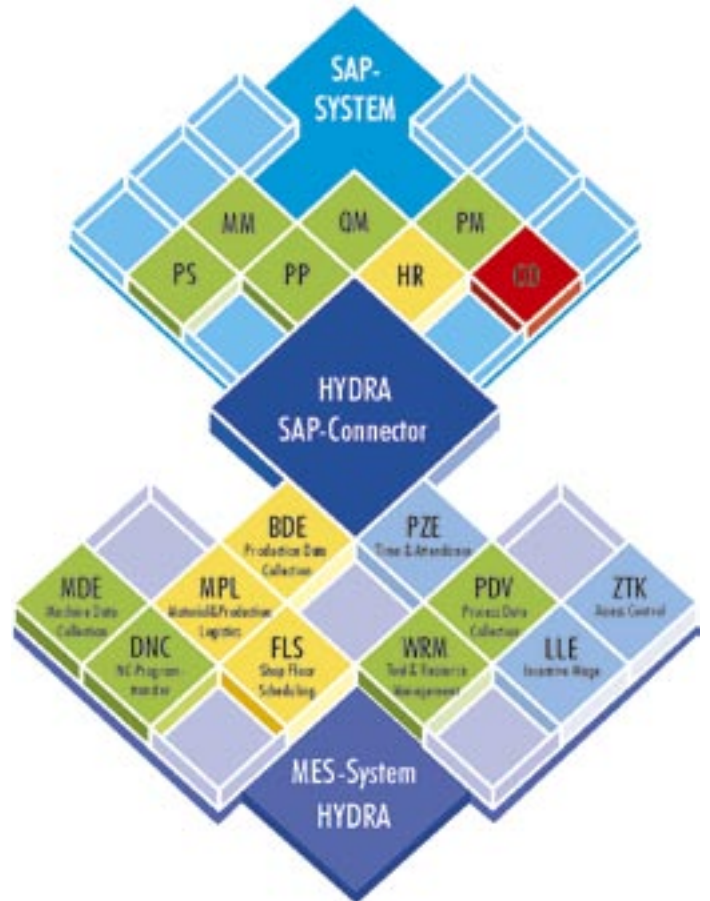


# HYDRA-MES for SAP

## HYDRA-MES: the optimum complement of SAP modules

HYDRA is used as MES within the SAP environment, if data from the production are not only supposed to be collected but also to be processed and evaluated in an integrated way. HYDRA complements the SAP functions in a very effective way, particularly in machine or process-related areas.

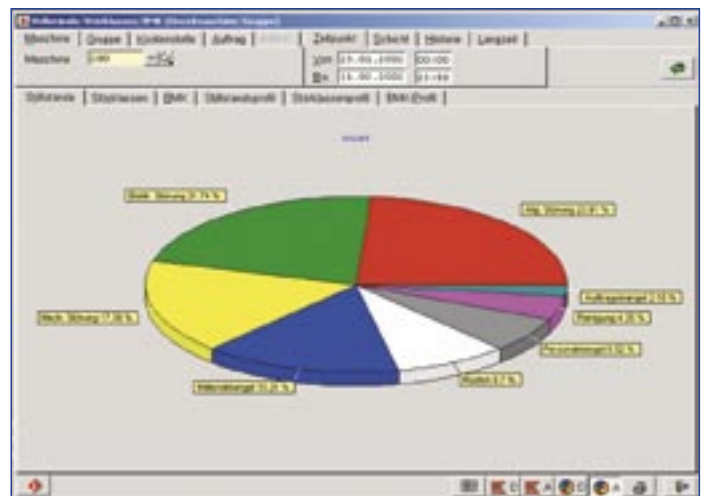
**Your benefits:** HYDRA provides the SAP modules with the current data, without a complicated paper management and time-consuming post capture of data. By means of the practice-proven HYDRA functions you recognize production and resource bottlenecks early, which enables you to react and take countermeasures on time. HYDRA helps with setting up a “paperless” production and transports the required information such as drawings, inspection plans, work instructions and bills of material to the workplaces and machines without additional effort.



The HYDRA-mySAP-Connector provides for the communication with the SAP systems. It uses SAP standard technologies such as ALE or RFC and is also in the position to communicate with the NetWeaver.



On the SAP clients, HYDRA shows online the current status of machines, equipment, production orders and processes. Each user can compile his or her individual layouts.



HYDRA monitors machines, processes and equipment. At the push of a button you get an exact overview about the frequency and the duration of standstills and disturbances in an selected period of time.

# HYDRA-MES for SAP

## Closer to the production with HYDRA

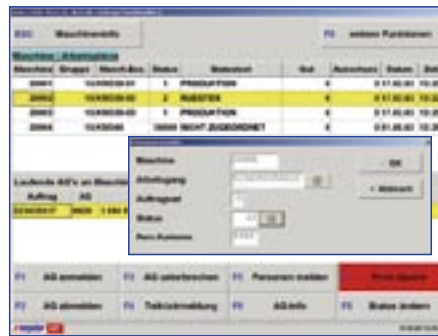
The acceptance and thus the efficiency of production-related systems depend largely upon how well the work of the machine operators, setters and foremen is supported. The most important prerequisite is that the data can be collected reliably and as easily as possible at its origin. HYDRA-MES-systems use terminals, industry PCs and data collection devices which can be operated ergonomically and for which the dialogs can be set individually, corresponding to the respective tasks.

HYDRA-MES terminals and data collection devices possess appropriate equipment for the integration into the production environment as well as interfaces for the direct upload of data from machine controls, scales, measuring devices and other peripheral equipment. If required, adequate printers can be connected to print shop papers, labels and accompanying documents. The devices support a "paperless" production by displaying important information for setters and machine operators.

## Advantages of the integration: a terminal for all cases

The benefits of an integrated MES solution such as HYDRA become especially apparent when it comes to the terminals: data for production and maintenance orders, machines, persons, inspection orders, materials and batches can be recorded at one device. The uniform user interface reduces the investment volume as well as the effort for operations and the education of workers.

From the simple data entry functions to the complex reporting processes within the in-production inspection: via individual configurations the user can set,



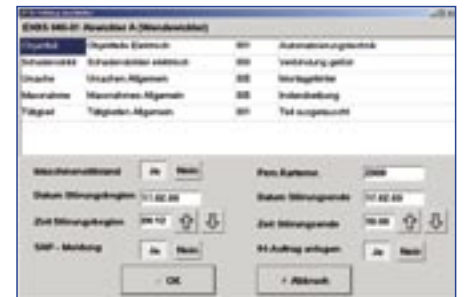
which functions should to be available at which terminals.

## Valuable support for SAP applications

Moreover, the HYDRA system administrator is in the position to adjust the layout and the terminal dialogs to the specific situations.



An example for the perfect integration into the world of SAP: the maintenance catalog from PM is displayed at the terminal of the production data collection. The employee posts the required times and uploads them directly to PM. HYDRA causes the automatic generation of a maintenance order in PM.



The input of data is especially comfortable via touch screen terminals. HYDRA users can choose whether they want to use data collection terminals of MPDV, devices of other manufacturers or even common PCs. The HYDRA software can be run on devices that are compatible with PCs. If a Local Area Network (LAN) is neither existing nor planned, the devices can also be connected via wireless-LAN.

## MPDV Mikrolab GmbH

Römering 1  
74821 Mosbach  
Germany  
Fon +49 (62 61) 9 20 9-0  
info@mpdv.de · www.mpdv.de

## MPDV Locations:

Mosbach · Hamburg · Hamm · Heidelberg ·  
Munich · Stuttgart · Winterthur / CH ·  
Amboise / F · Fort Mill / USA

© 2005 MPDV Mikrolab GmbH  
Doku-Ident: PRSAPM-ENG 09/2005

The mentioned product names are trademarks of the respective producers or suppliers.  
HYDRA® is an entered trademark of MPDV Mikrolab GmbH.